

# Air quality in Portugal: From emissions to measures

Francisco Ferreira

# Context

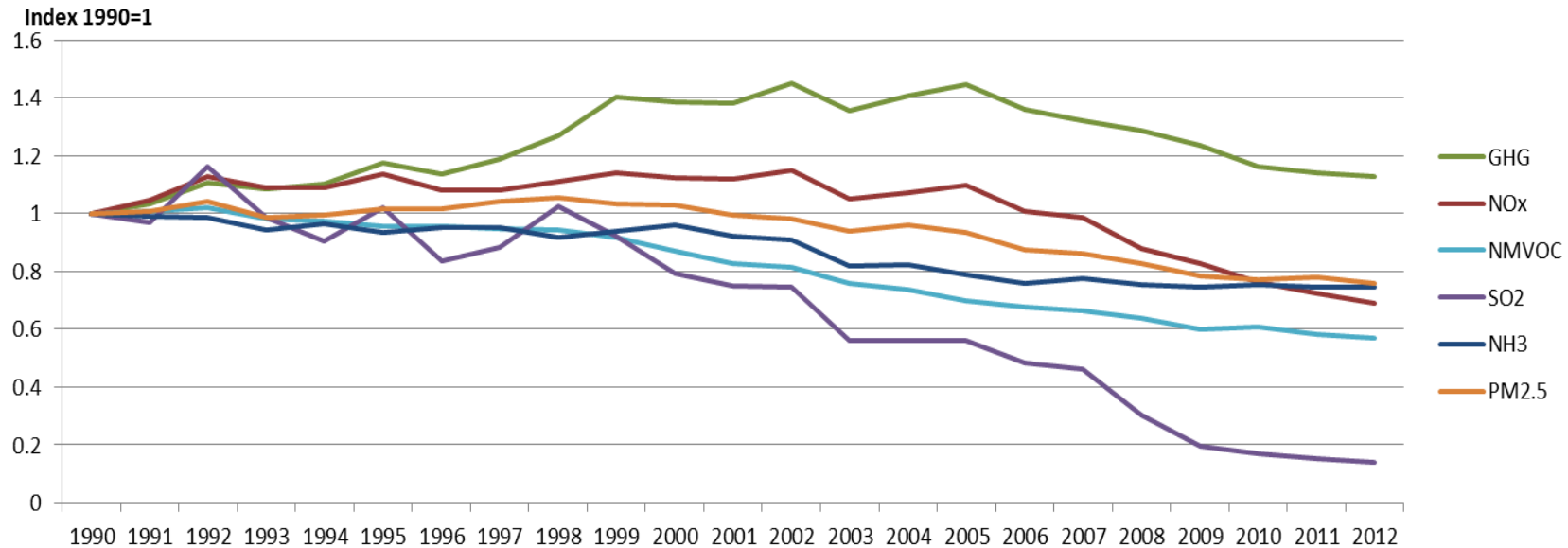
## **National Air Strategy for 2020**

- **Gothenburg Protocol (2020)**
- **NEC (2030)**
  
- **Air quality levels for 2020**  
*(modelling by University of Aveiro)*
  
- **Definition of policies and measures**

# Context

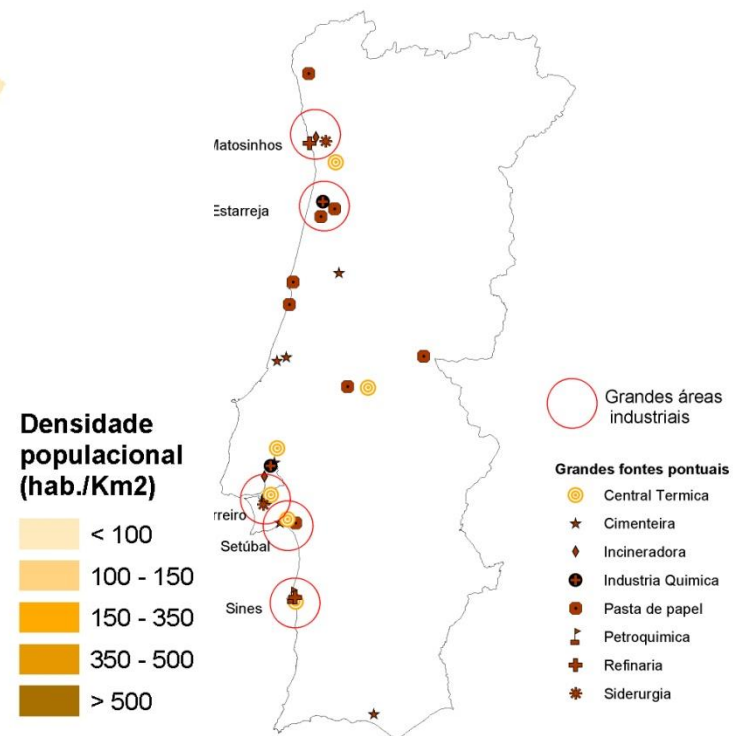
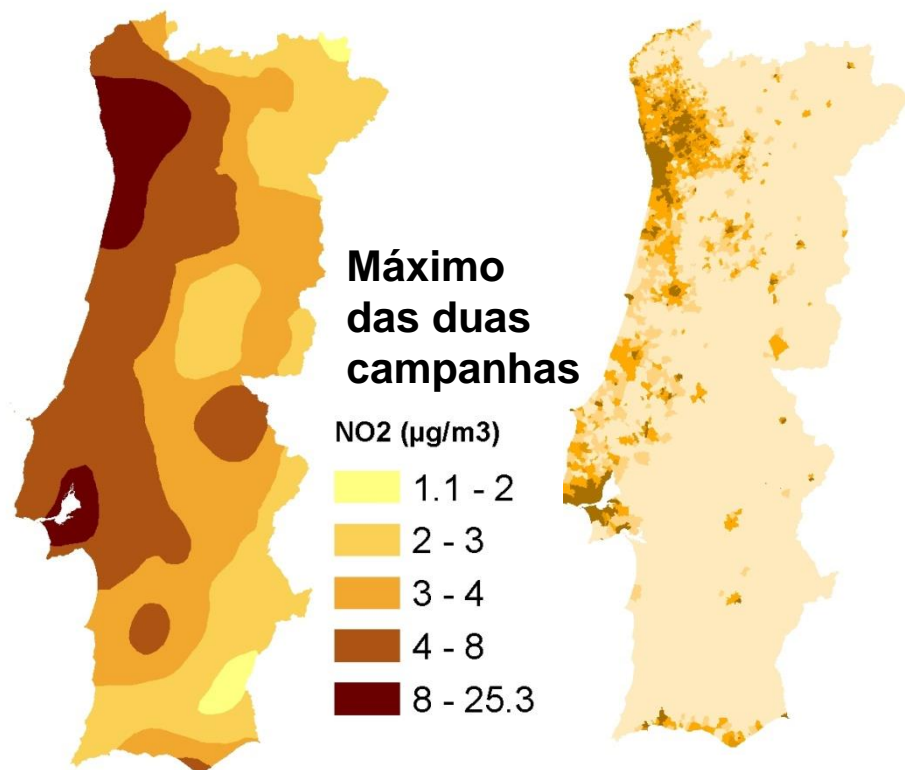
## Greenhouse gases and air pollutants emissions historic evolution

Pollutant	$\Delta 2012-1990$	$\Delta 2012-2005$
GHG	13%	-32%
NOx	-31%	-41%
NMVOC	-43%	-13%
SO2	-86%	-42%
NH3	-25%	-4%
PM2.5	-24%	-18%
PM10	-16%	-29%
TSP	7%	-73%
CO	-61%	-20%

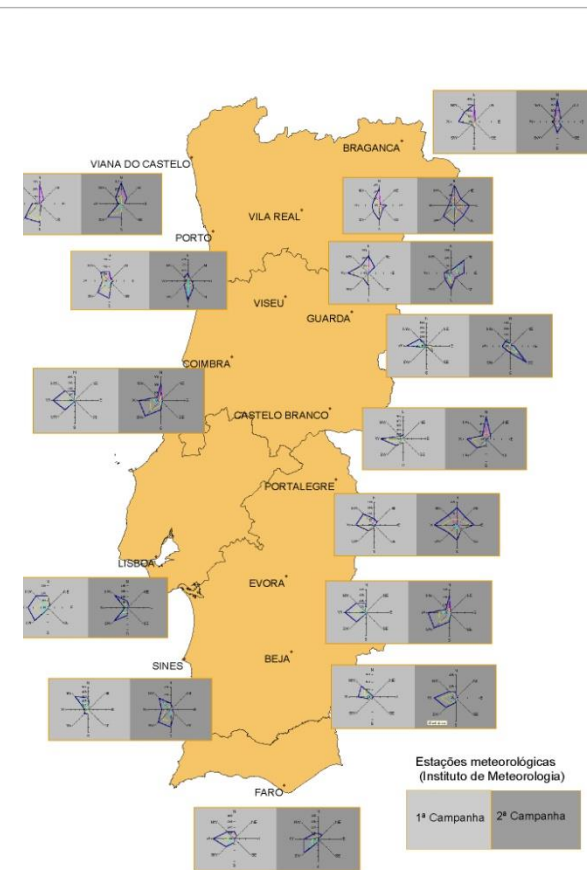
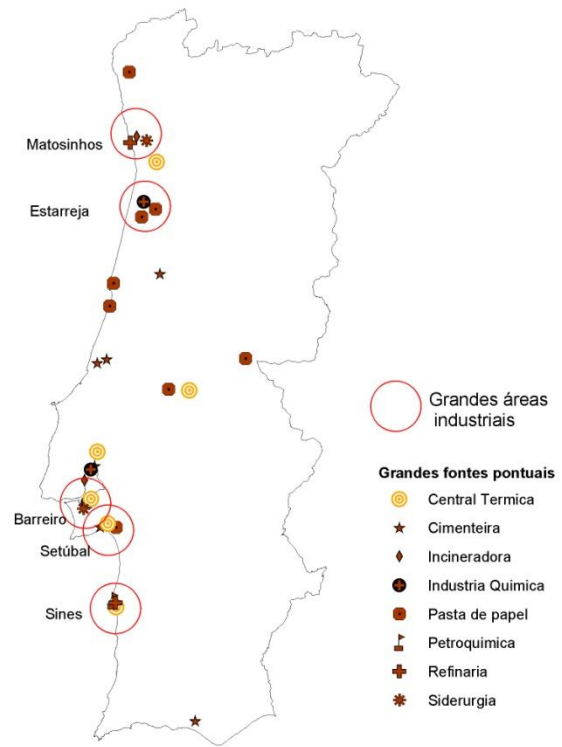
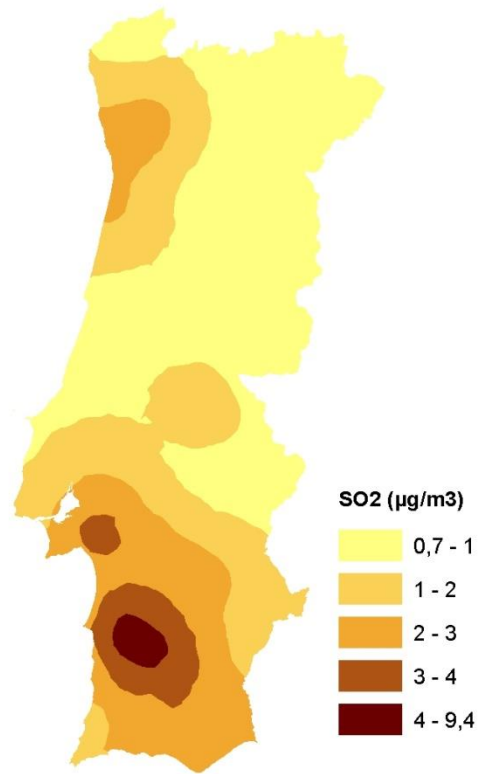




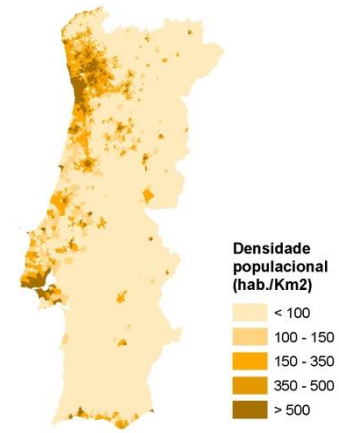
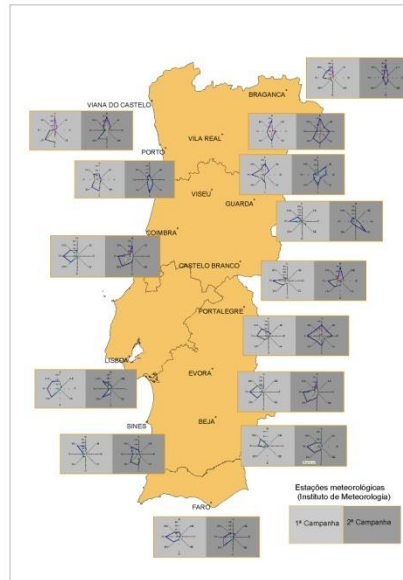
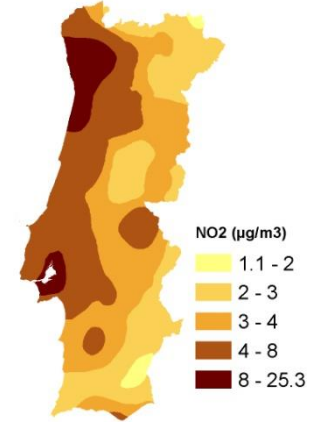
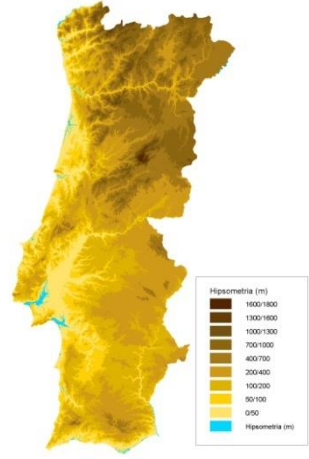
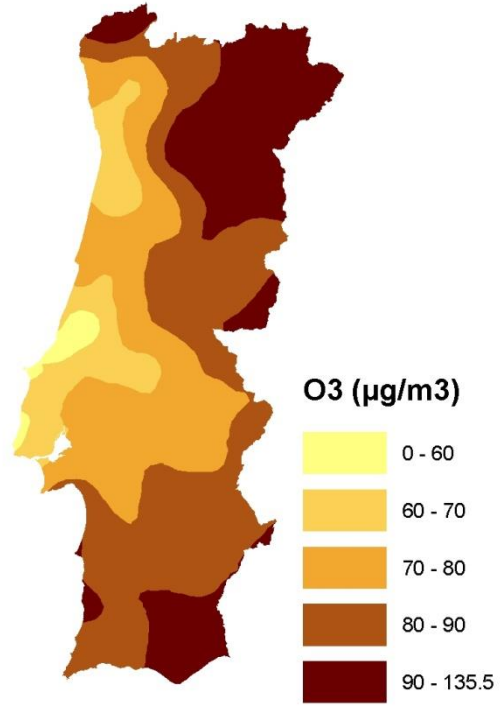
# NO<sub>2</sub>



# SO<sub>2</sub>

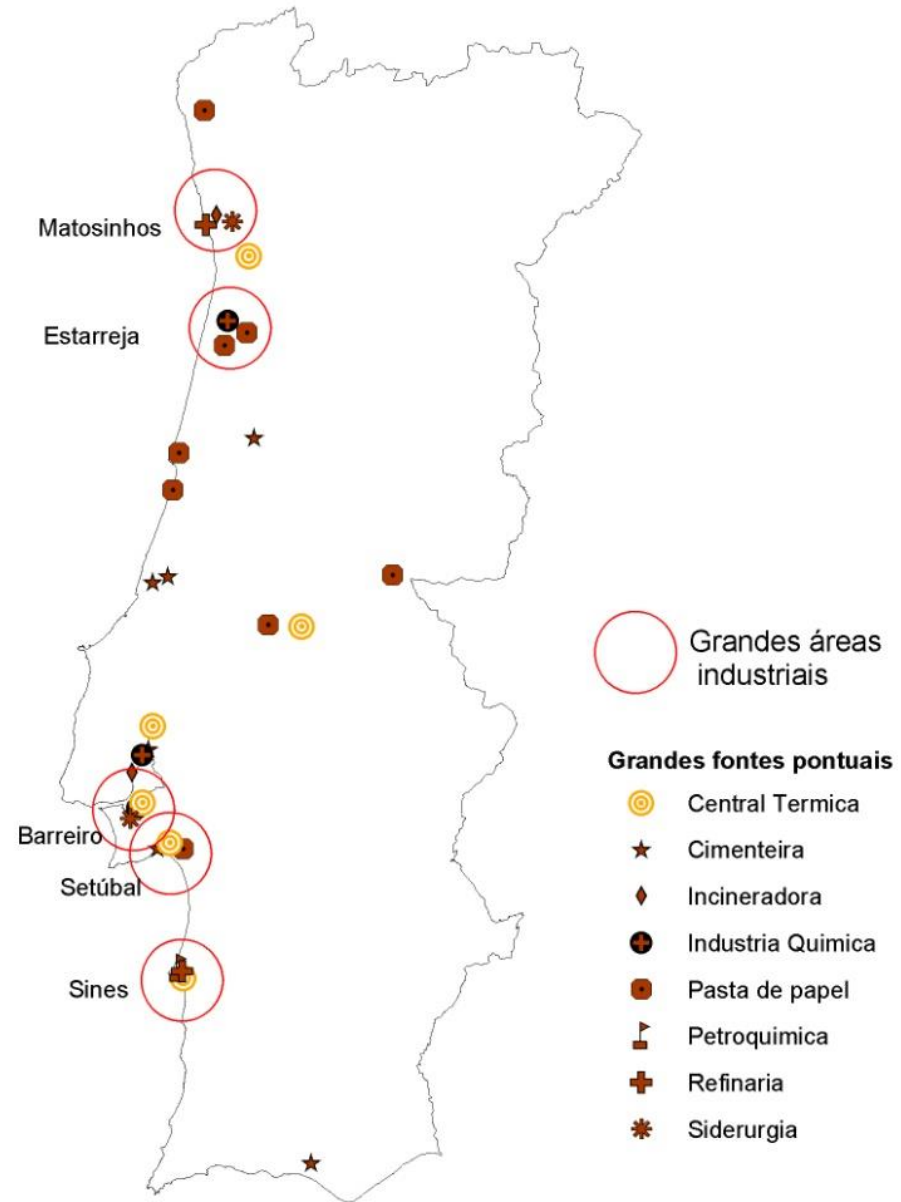


O<sub>3</sub>



# Point sources

- Power Plants (2 coal)
- Siderurgy
- Refineries
- Pulp and paper
- Chemical
- Cement





# Example: Sines Power Plant





# Flue-gas desulphurization



# Denitrification



# Electrostatic precipitators



# Real-time emissions measurements



- Example: Particles, CO, NOx, TOC, HCl, HF

Sistema Informação Ambiental Centralizada Utilizador: Operador Data: 07-07-05

Ecrã Principal Configuração Alarmes Gráficos Relatórios Estatísticas Utilizadores 15:19:59

Caso Geral			Co-Incineração		
J8P51			J9P51		
Valores Corrigidos a O2 Referencia			Valores Corrigidos a O2 Referencia		
SO2	72.02	mg/Nm3	SO2	0.50	mg/Nm3
NOx	277.70	mg/Nm3	NOx	296.70	mg/Nm3
CO	634.69	mg/Nm3	CO	817.26	mg/Nm3
CO2	11.83	Vol %	CO2	17.78	Vol %
COT	28.89	mg/Nm3	COT	26.52	mg/Nm3
NH3	19.04	mg/Nm3	NH3	1.41	mg/Nm3
H2O	7.26	Vol %	H2O	16.41	Vol %
HCL	14.21	mg/Nm3	HCL	0.18	mg/Nm3
HF	0.22	mg/Nm3	HF	0.60	mg/Nm3
O2	13.48	Vol %	O2	11.53	Vol %
Partículas	478	mg/Nm3	Partículas	2.75	mg/Nm3
Caudal	241183.77	Nm3/h	Caudal	690023.36	Nm3/h
Temperatura	147.79	°C (Gases)	Temperatura	103.50	°C (Gases)
Temperatura	906.26	°C (Processo)	Temperatura	934.67	°C (Processo)
Pressão	930.62	mBar	Pressão	1001.68	mBar

Click para alternar entre valores corrigidos e não corrigidos

Moinho Carvão K8P14		Moinho Carvão K9P14	
Valores Normalizados		Valores Normalizados	
Partículas	0.00 mg/Nm3	Partículas	4.00 mg/Nm3

Ultimas Médias Previsões Horárias Previsões Diárias N° Horas > VLE Comunicação (PLC)



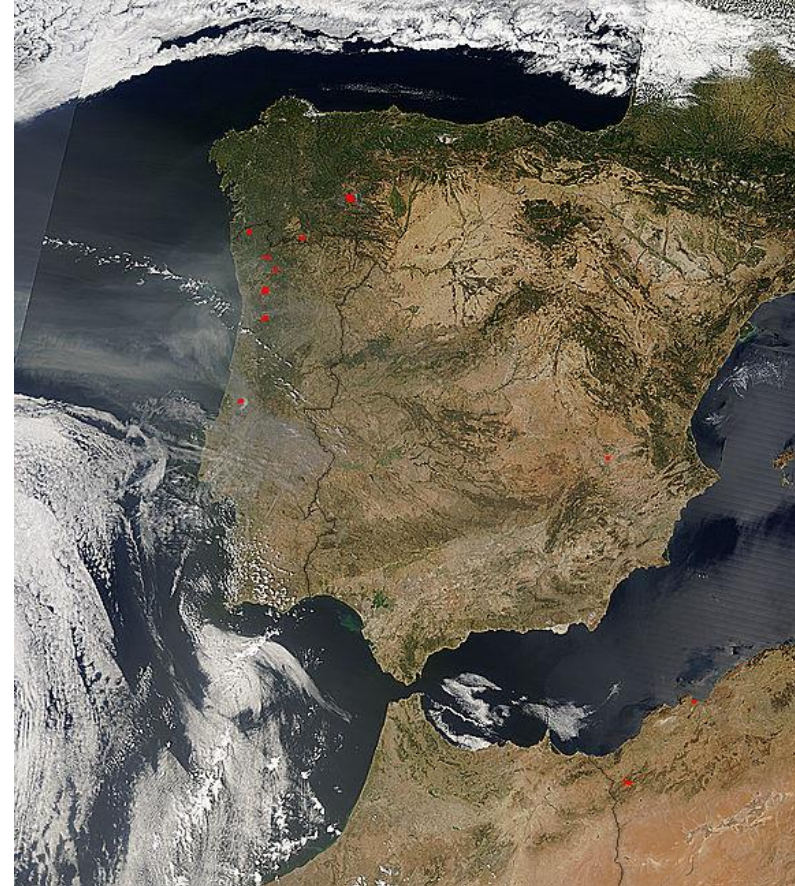
# Hazardous waste incineration

- Sampling equipment



# Sahara/Sahel and forest fires (natural events)

- **Station monitoring data**
- Modelling
- Satellite imagery



# Natural events identification

*Tools:*

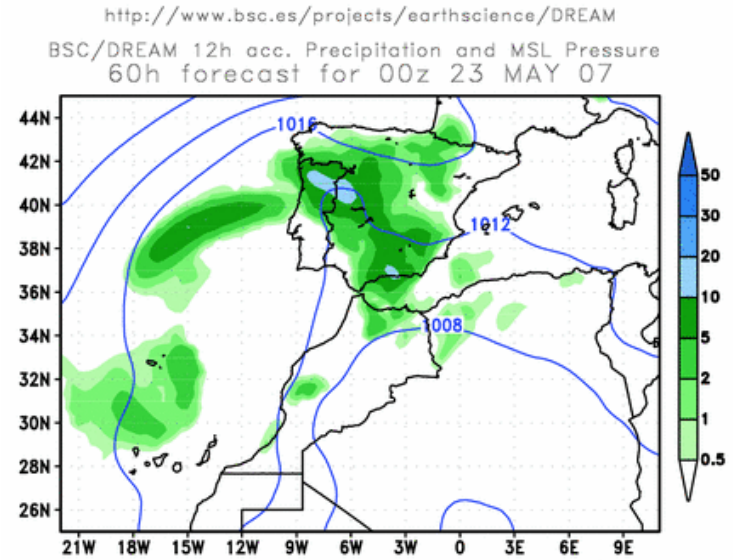
- 1. BSC-DREAM**
- 2. SKIRON**
- 3. NAAPs-NRL**
- 4. Air masses retrotrajectories (HYSPLIT) Navy-USA NRL**
- 5. SeaWIFS, MODIS-Terra satellite imagery**
- 6. TOMS**



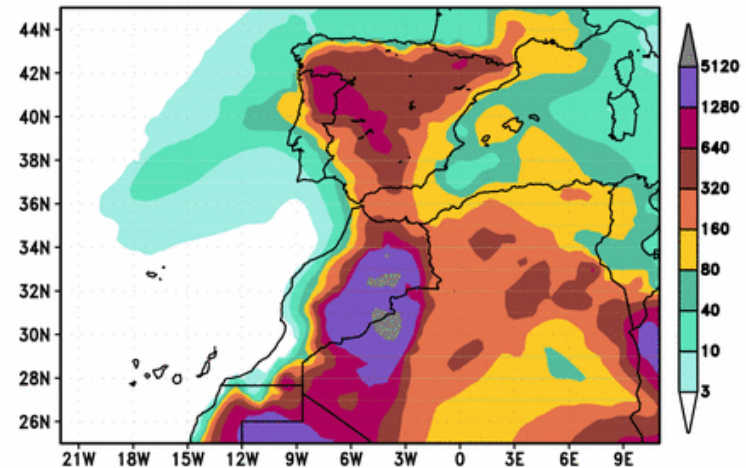
# Identification fo natural events

## *Northern African events*

- **Model BSC-Dream**  
(Barcelona Supercomputer Centre)
- Based on satellite imagery
- Cloud cover
- Aerosols
- Surface concentration
- Forecasting



BSC/DREAM Lowest Model Level Dust Conc. ( $\mu\text{g}/\text{m}^3$ )  
60h forecast for 00z 23 MAY 07

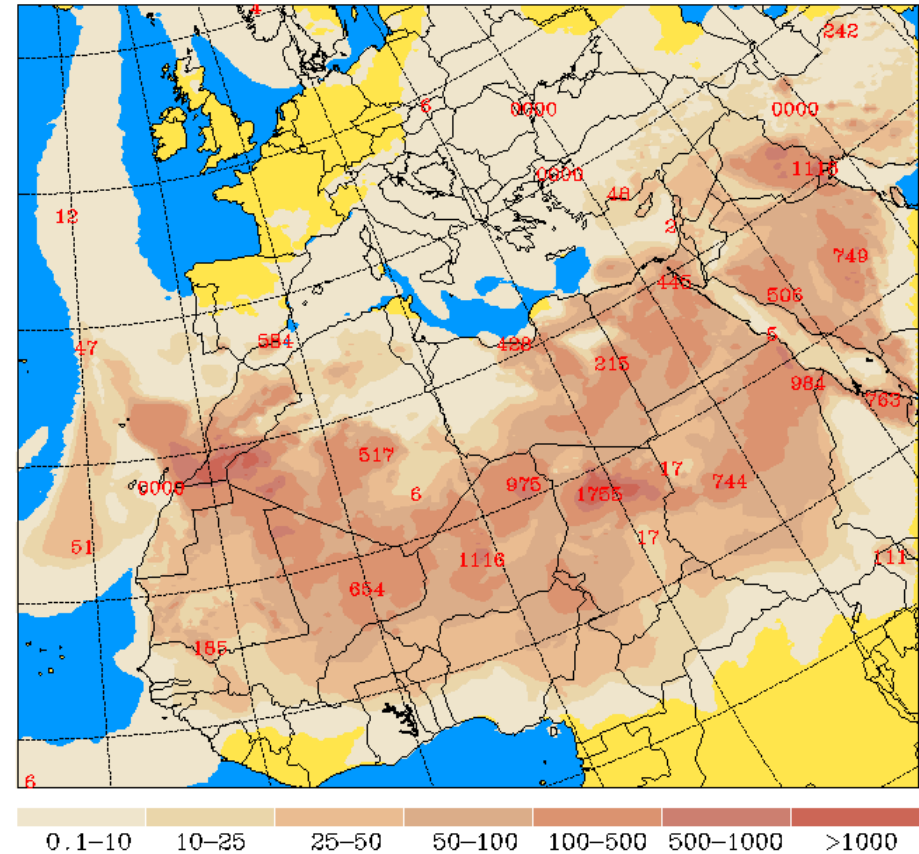


# Identification fo natural events

## *Northern African events*

- **Modelo SKIRON  
(Univ. Atenas)**

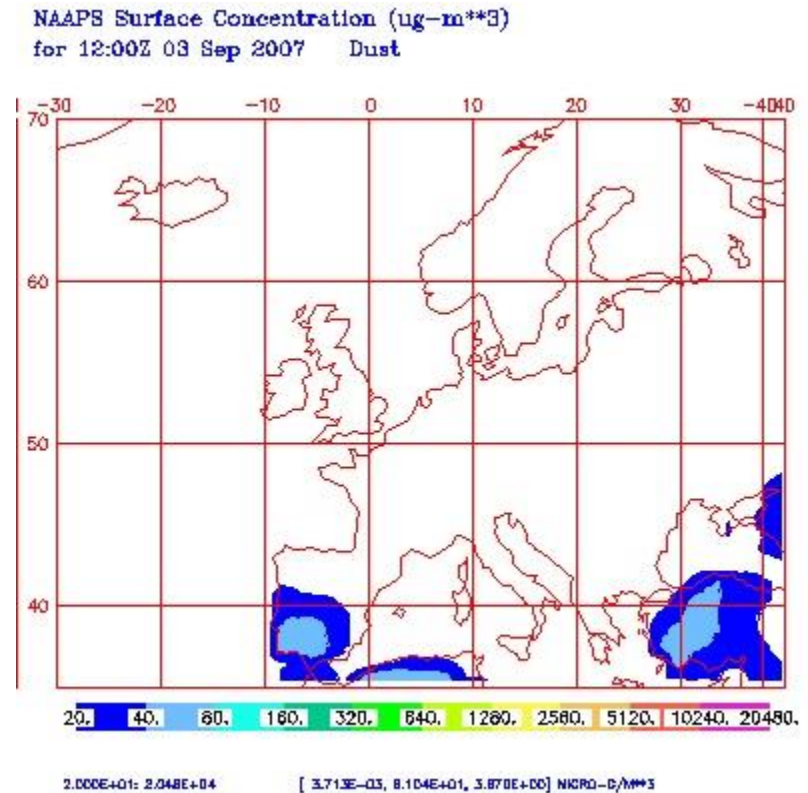
University of Athens (AM&WFG) SKIRON Forecast  
Dust Concentration Near Ground ( $\mu\text{g}/\text{m}^3$ ) 11/02/08 at 12 UTC



# Identification fo natural events

## *Northern African events*

- **Modelo NAAPS**
- **(Navy Aerosol Analysis and Prediction System)**
- **Naaps Global Aerosol Model**



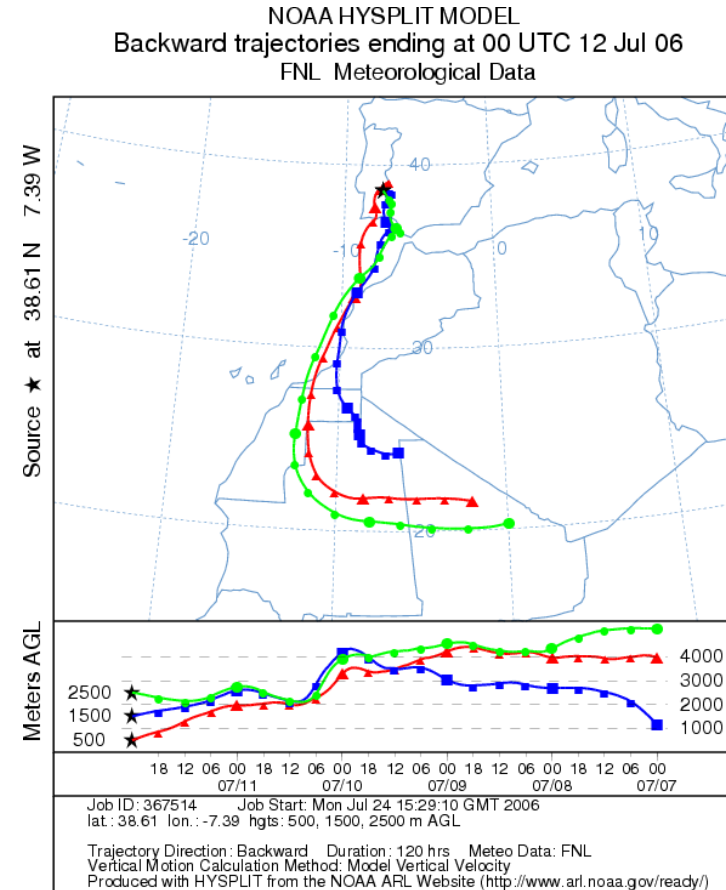
Naval Research Laboratory, Monterey USA

<http://www.nrlmry.navy.mil/aerosol/#currentaerosolmodeling>

# Identification fo natural events

## *Northern African events*

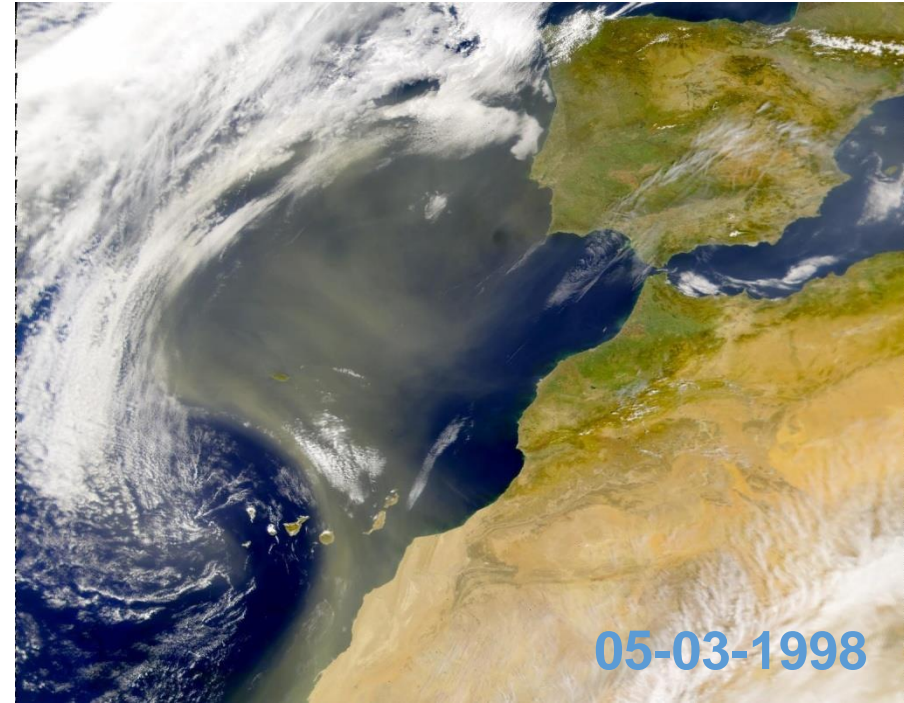
- **Modelo Hysplit**
- **(NOAA/Dep. Commerce - USA)**



**MODELO** <ftp://www.arl.noaa.gov/pub/models>  
**METEO FILES** <ftp://www.arl.noaa.gov/pub/archives/fnl>

# Identification fo natural events

## *Northern African events*



- **Satélite SeaWIFS (NASA)**
- SeaWIFS: for chlorophyll
- Not idéal but good photos 😊 (ex.: 05/Mar/1998)

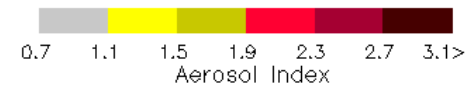
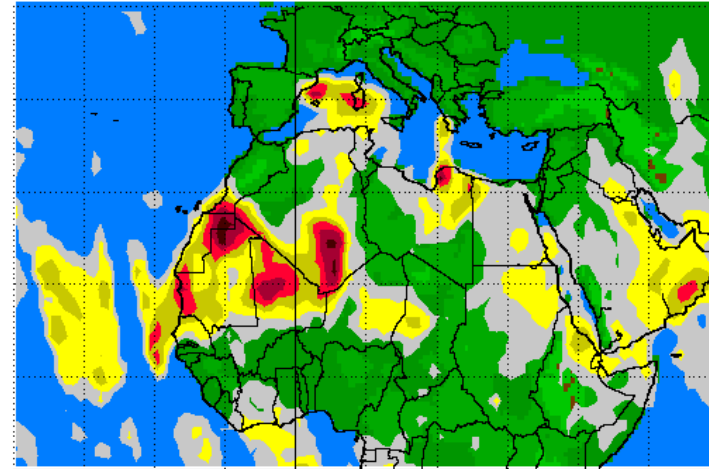
[http://seawifs.gsfc.nasa.gov/cgihrs/hrpt\\_browser.pl](http://seawifs.gsfc.nasa.gov/cgihrs/hrpt_browser.pl)

# Identification fo natural events

## *Northern African events*

- **Satélite TOMS (NASA)**
- Aerosols index
- Outdated

Earth Probe TOMS  
Absorbing Aerosol Index for Aug 25, 2000



*Coddard Space  
Flight Center*

[EUROPA](http://jwocky.gsfc.nasa.gov/pub/tmp/meduse)

[ftp://jwocky.gsfc.nasa.gov/pub/tmp/meduse](http://jwocky.gsfc.nasa.gov/pub/tmp/meduse)

[ESCALA GLOBAL](http://jwocky.gsfc.nasa.gov/)

<http://jwocky.gsfc.nasa.gov/>

# Identification fo natural events

*Chemical mass balance*

<b>crustal</b>	<b>%</b>	<b>PM<sub>10</sub></b>
CO <sub>3</sub> <sup>2-</sup>	μg.m <sup>-3</sup>	9.12
SiO <sub>2</sub>	μg.m <sup>-3</sup>	6.97
Al <sub>2</sub> O <sub>3</sub>	μg.m <sup>-3</sup>	2.58
P <sub>2</sub> O <sub>5</sub>	μg.m <sup>-3</sup>	0.89
Ca	μg.m <sup>-3</sup>	6.08
Fe	μg.m <sup>-3</sup>	1.47
K	μg.m <sup>-3</sup>	1.43
Mg	μg.m <sup>-3</sup>	0.45

## CRUSTAL

CO<sub>3</sub><sup>2-</sup>, SiO<sub>2</sub>, Al<sub>2</sub>O<sub>3</sub>, P<sub>2</sub>O<sub>5</sub>, Ca, Fe, K, Mg

$$2.5^* \text{Al}_2\text{O}_3 = \text{SiO}_2$$

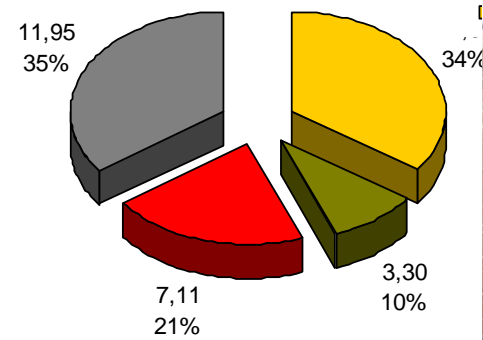
<b>GRAVIMETRY</b>	<b>PM<sub>10</sub></b>	<b>61.3 μg.m<sup>-3</sup></b>
-------------------	------------------------	-------------------------------

# Identification fo natural events

*Chemical mass balance*

>Rodov

AVL fim de semana



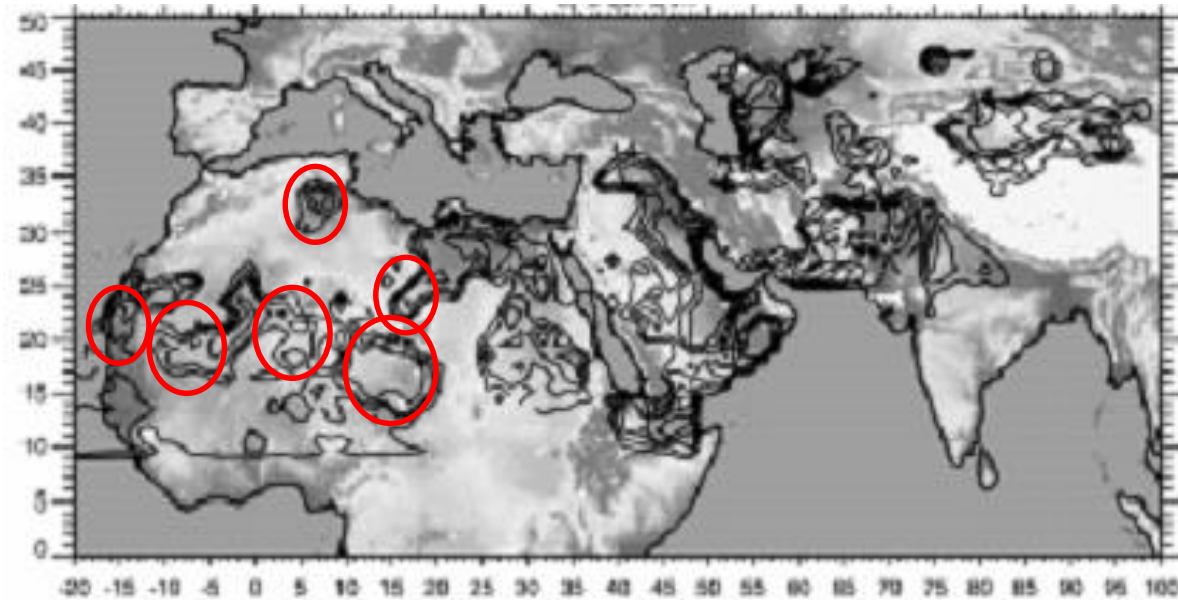
■ crustal ■ marinho ■ part. sec. ■ tráfego rodov





# Long distance transport

## Origin of episodes



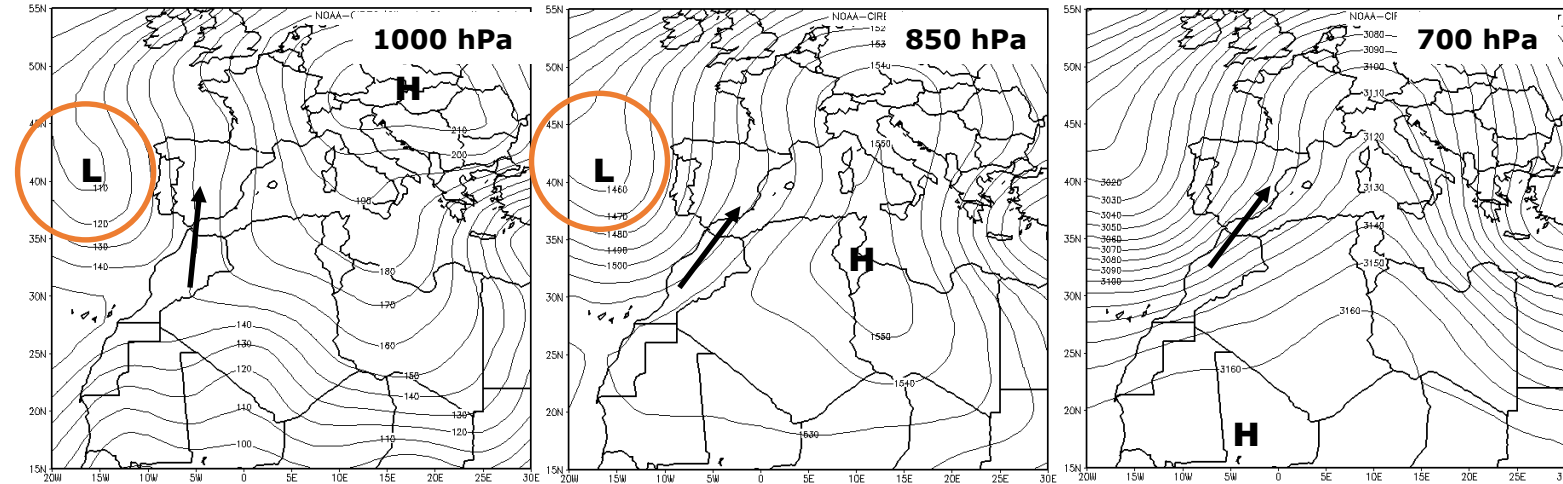
# Natural events

*Metereology and probability of occurrence*

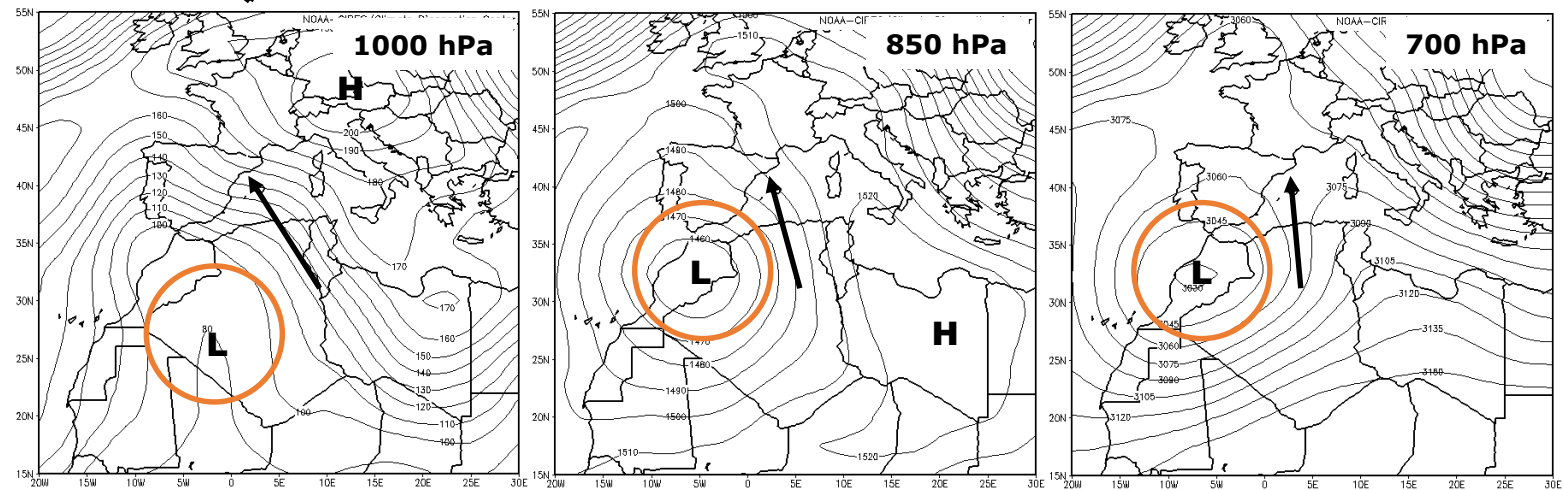
Tipo de evento	Período	Fonte e meteorologia
Fracas probabilidade, apenas áreas Sul	Novembro - Janeiro	Injecção atmosférica de poeiras inibida, eventos de poeiras apenas nas áreas Sul (P. Ibérica)
Eventos secos	Fevereiro - Março	Sahel Nuvens de partículas do Atlântico Anticiclones (Med+NAF)
Chuvas vermelhas & Eventos secos	Abril - Junho	Sahel a Sahara Depressões (SW Portugal) e/ou Anticiclone (Med+NAF)
Eventos secos	Julho - Agosto	Sahara Vastos e intensos <i>outbreaks</i> de poeiras; anticyclone (Med+NAF)
Chuvas vermelhas & Eventos secos	Setembro - Outubro	Sahara a Sahel Depressões (SW Portugal) e/ou Anticiclone (Med+NAF)

# Transporte a longa distância de partículas: características meteorológicas

## Atlantic Depression:

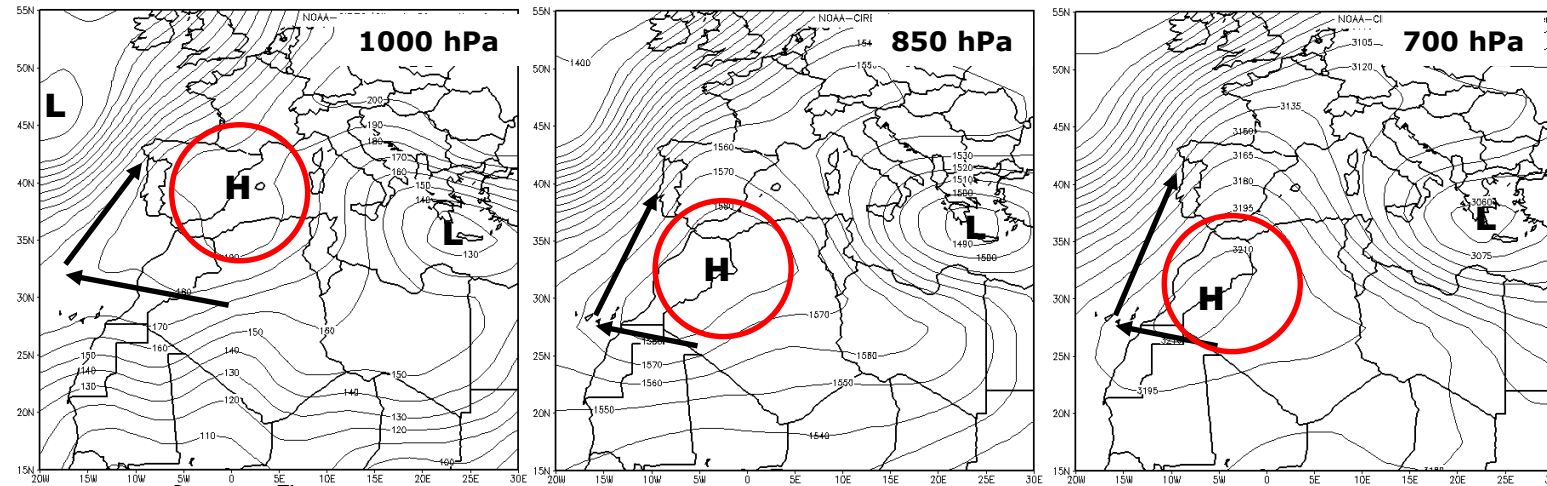


## North African Depression:

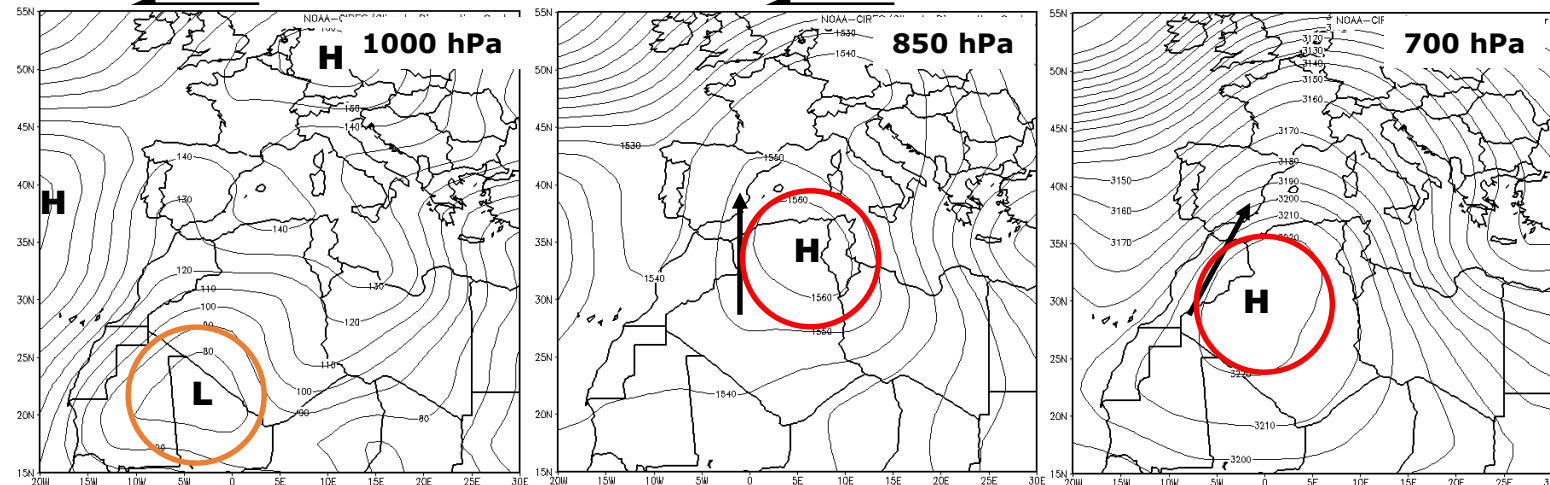


# Transporte a longa distância de partículas: características meteorológicas

## North African High in Surface

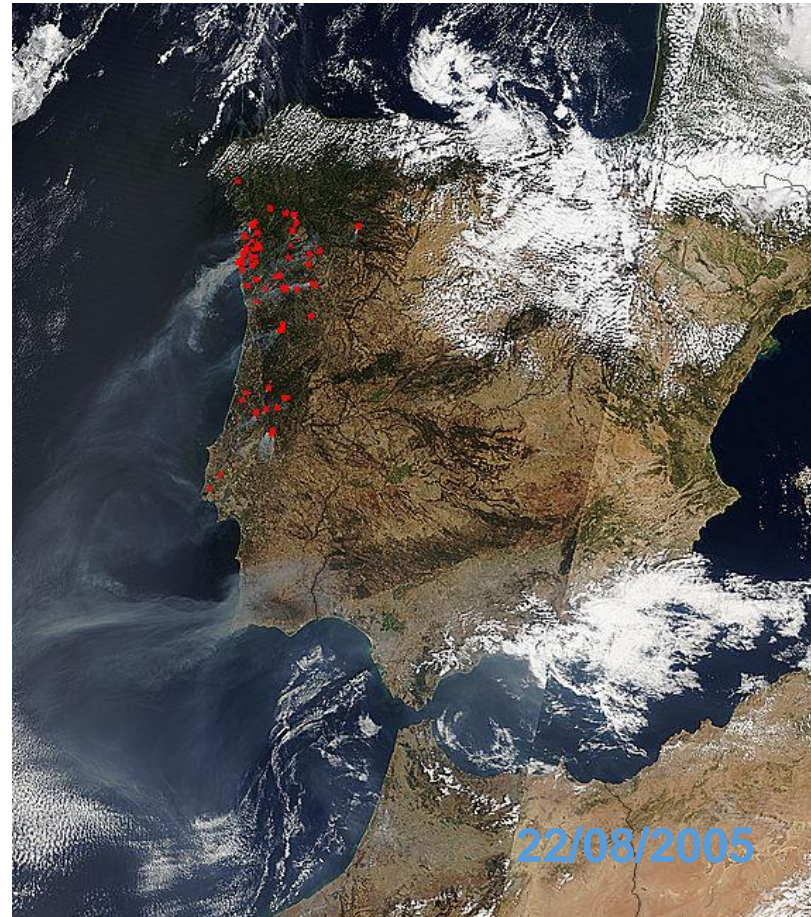


## North African High in Altitude



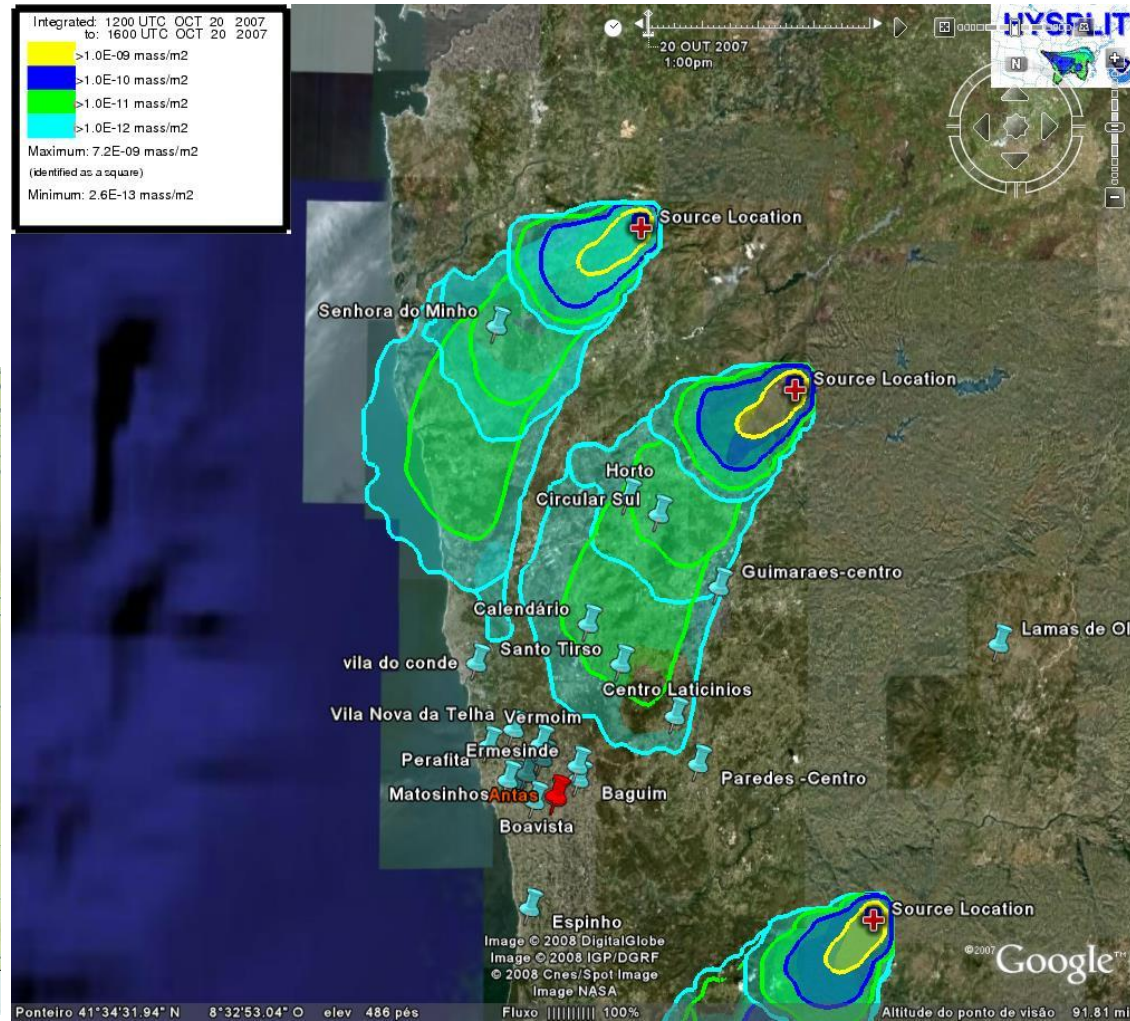
# Forest fires

- **Satellite (ex: Modis Terra e Aqua), Databases (ex: DGRF)**



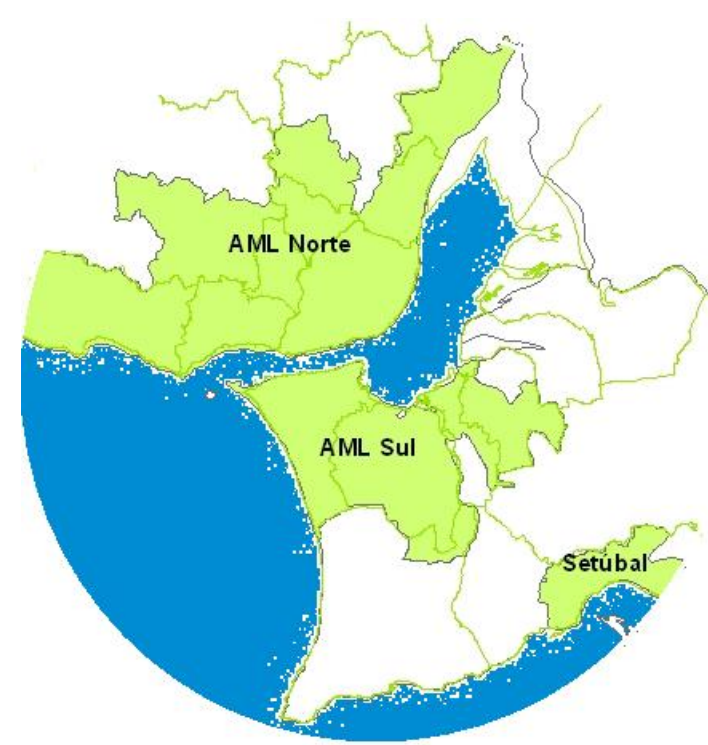
# Forest fires

- **Combination of satellite imagery\* + Model (Hysplit)**
- **\*web fire mapper**

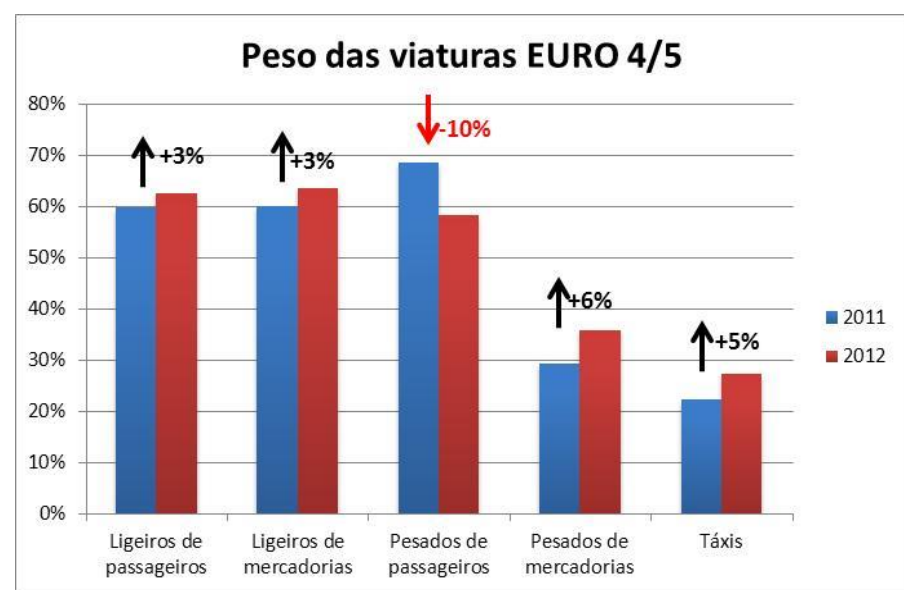
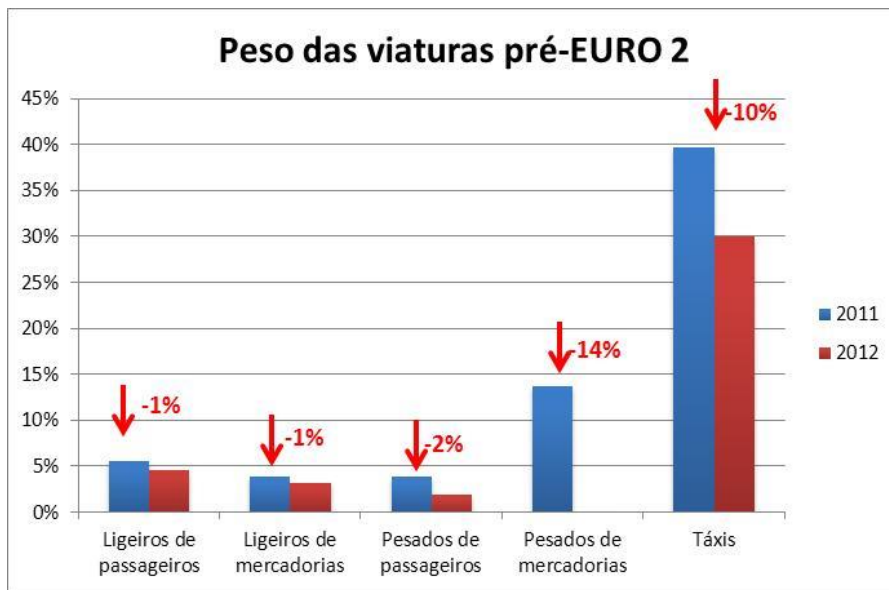
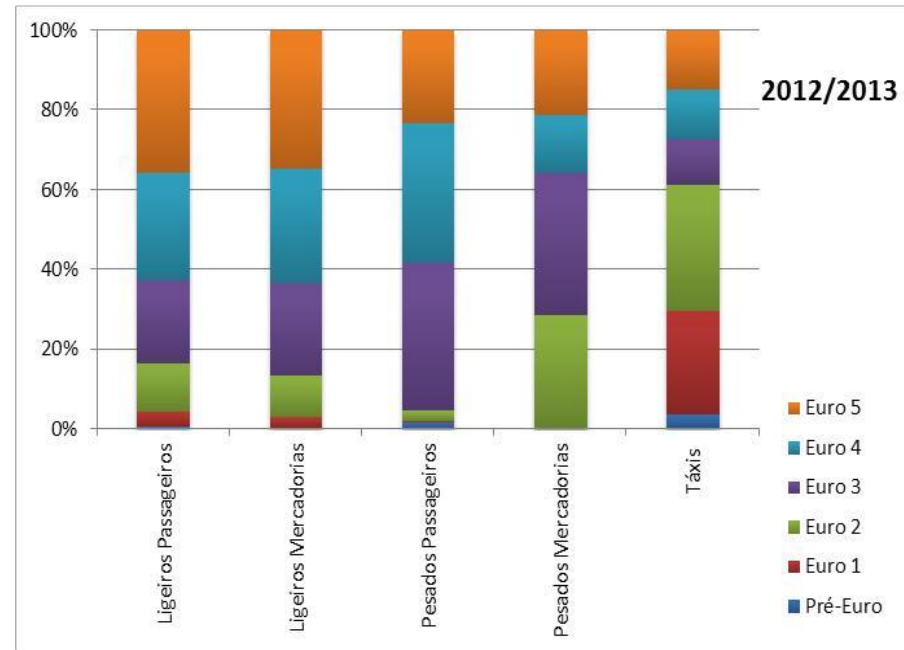
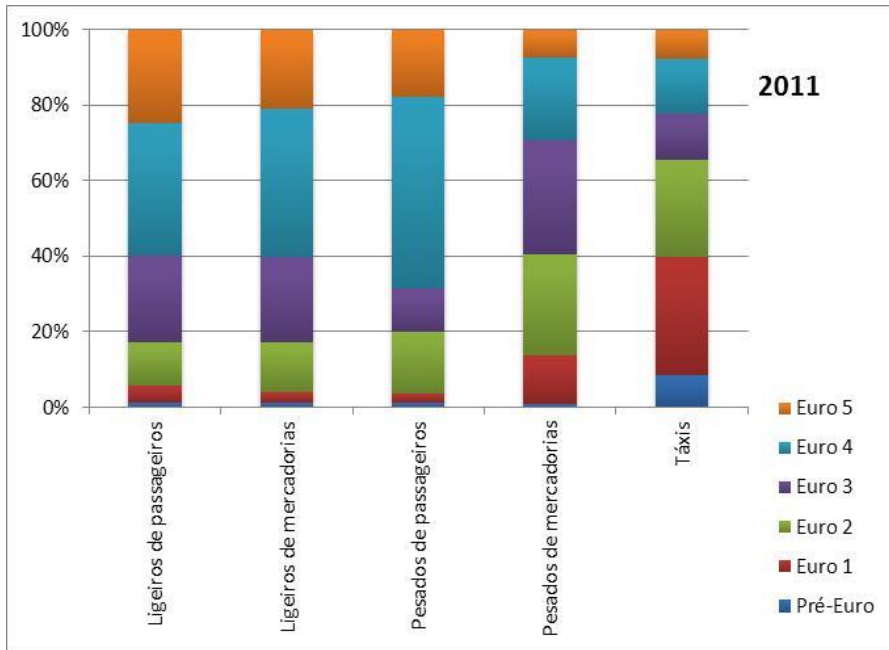


*Plans and Programmes to  
Improve Air quality*

---



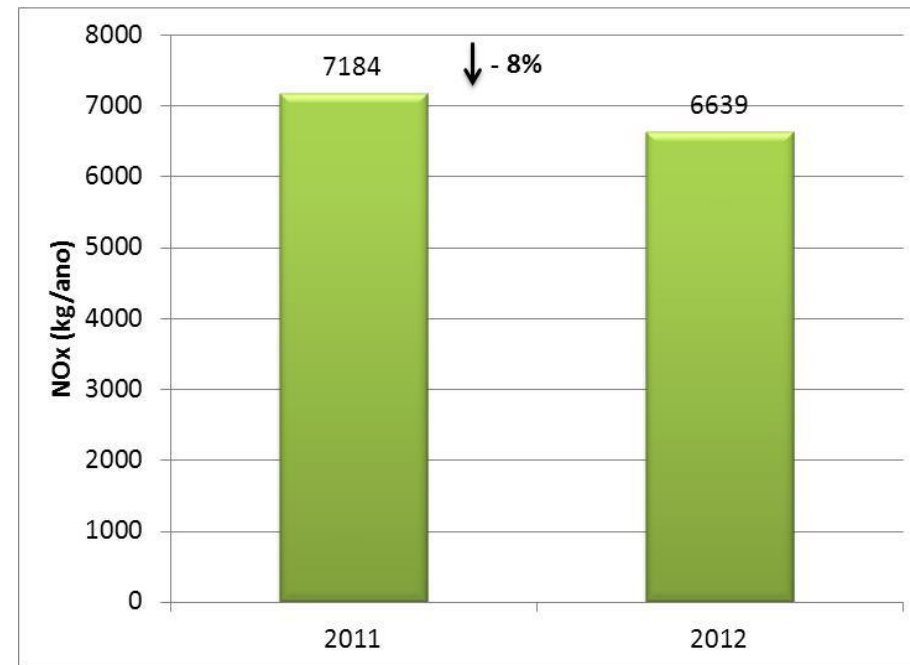
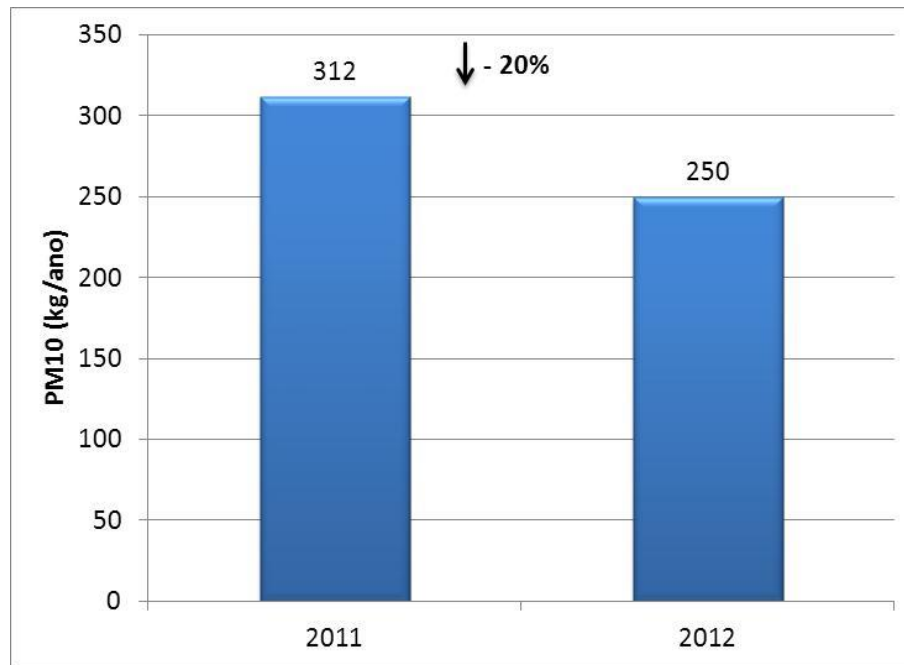
# Before and after ZER Phase II – Fleet characterization



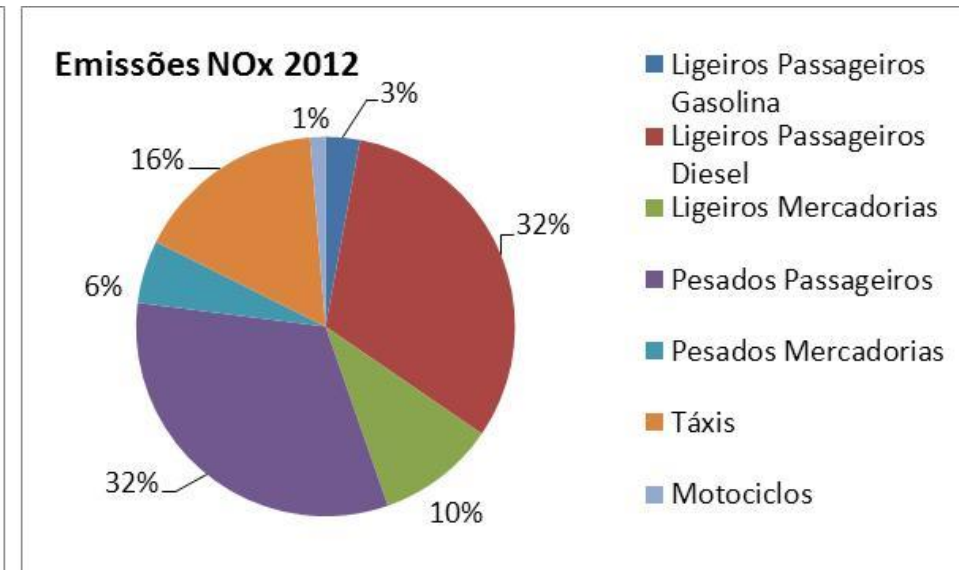
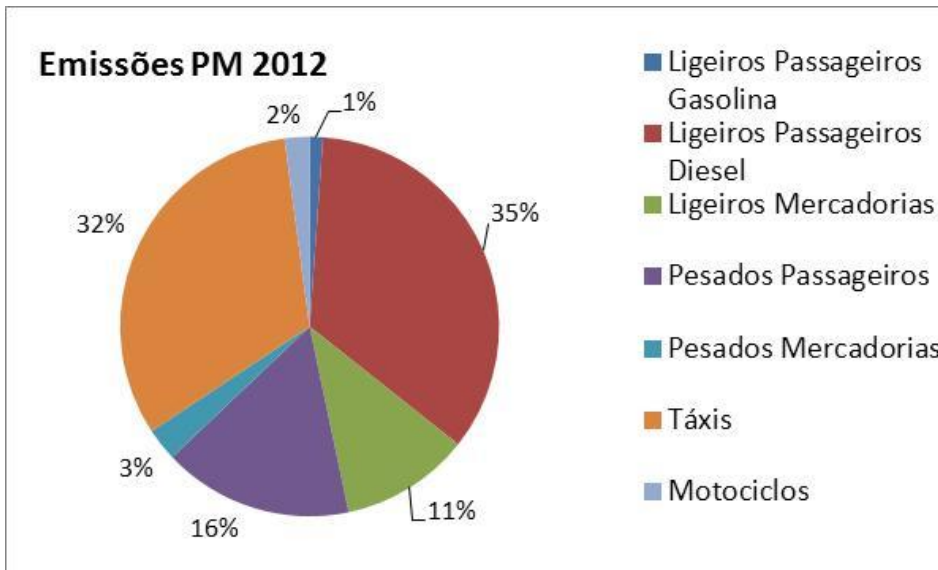
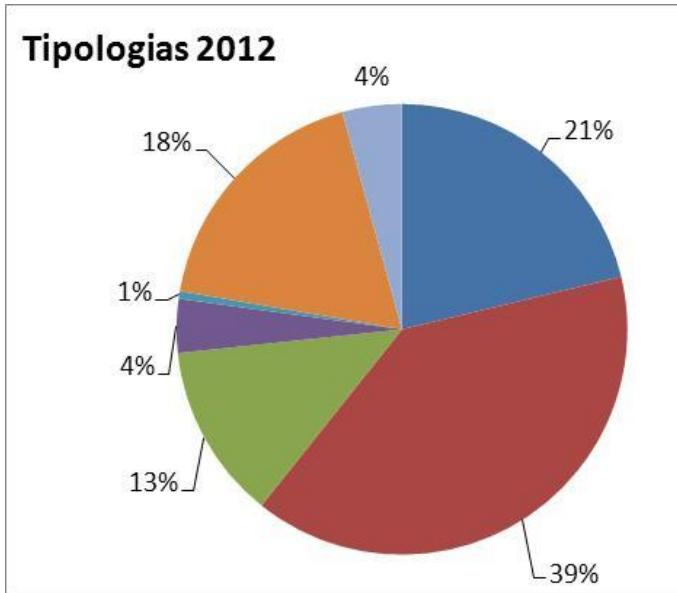


# Before and after ZER – Emissions (Lisbon Center)

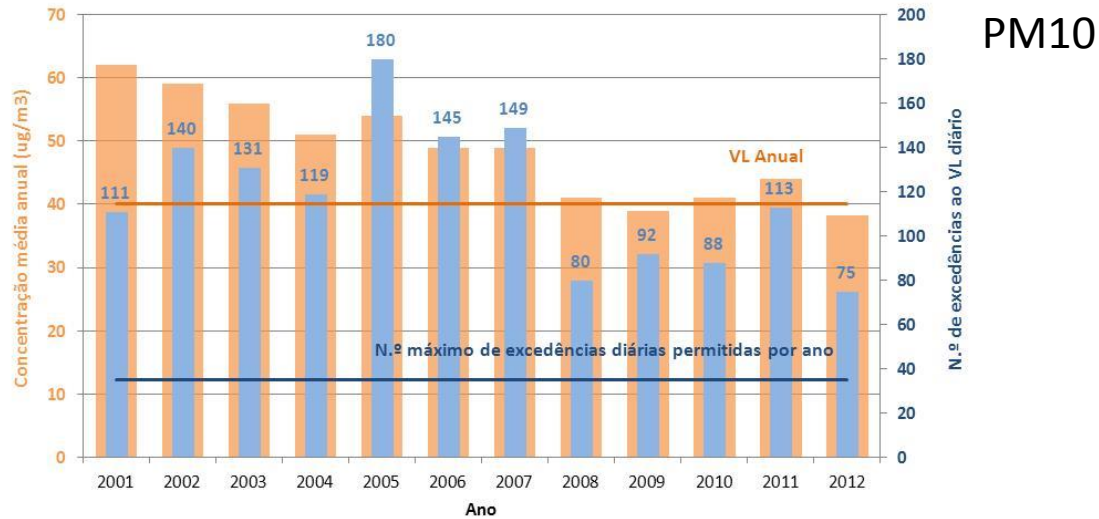
Less cars, modern fleets = less emissions



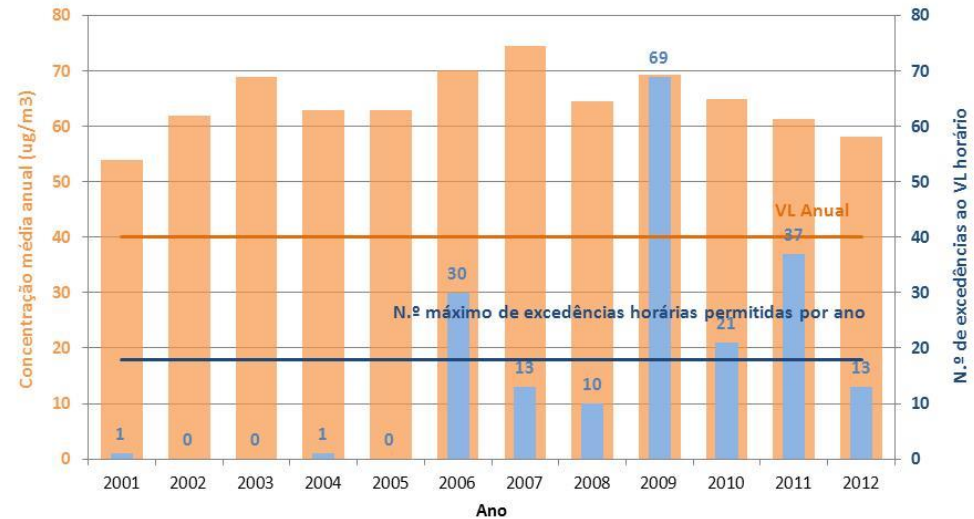
# Before and after ZER – Emissions (Lisbon Center)



# Avenida da Liberdade – 2001/2012



NOx



# Before and after ZER Phase II (AVL)

